

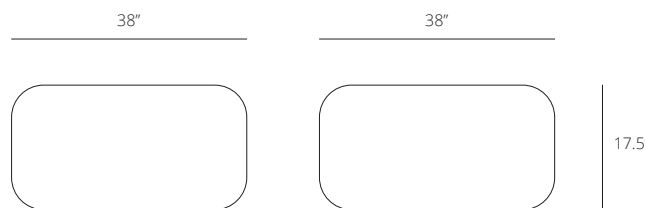
# Dot Ottoman - Mid

Morse Collection

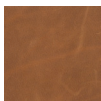


## PRODUCT INFO

<b>Description</b>	The Dot Ottomans are uncomplicated, multi-purpose poufs that double as a comfy seat or footrest. Dot Ottomans are light-weight and enduring with leather or velvet upholstery.	<b>Construction</b>	Contract quality inside and out. Solid pine and plywood frame wrapped in commercial grade upholstery fabrics with plastic levelers.
<b>Dimensions</b>	Overall: H17.5" W38" D38"	<b>Care</b>	Vacuum regularly with a soft brush attachment. Immediately blot spills with a clean white cloth, moving toward the center of the spill. Do not rub. Cleaning code: S
<b>Assembly</b>	Fully Assembled	<b>Lead time</b>	In-stock ships in 2 business days. Custom requests and backorders ship in 12-16 weeks.
<b>Finishes</b>	Leather: Chestnut Brown or Onyx - Upholstery: Static Grey, Frost, Fog, Coal, Peony. Custom finishes available - contact us!	<b>Warranty</b>	3 years For detailed information, visit <a href="http://rypen.com">rypen.com</a> .
<b>Certifications</b>	FIRE TEST   TSCA Title VI Compliant   California 93120 Compliant for Formaldehyde Phase II Chestnut Brown Leather: Martindale >100k   Onyx Leather: Martindale: >100k   Peony: Martindale: >100,000   Coal: Martindale: >100k   Fog: Martindale: >100k   Frost: Martindale: >100k   Static Grey: Martindale: >40,000		



ANALINE-DYED LEATHER

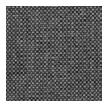


CHESTNUT BROWN



ONYX

VELVET UPHOLSTERY



STATIC GREY

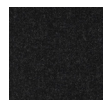


FROST

VELVET UPHOLSTERY

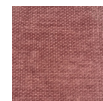


FOG



COAL

VELVET UPHOLSTERY



PEONY